

Site Accessibility Evaluation

Americans with Disabilities Act

And

Title 24 And Part 2 - California Building Code



Alice Keck Park
219 E Micheltorena St
Santa Barbara, CA 93101
Accessibility Evaluation
Inspection Date: 08/24/2023
Inspectors: Scott Saddlemire

Prepared By



SALLY SWANSON
ARCHITECTS, INC.

(415) 308 - 6555

Report Date: 11/03/2023

Table of Contents

Findings	3
Accessible Routes	3
Exterior Routes Memorial Park	3
Alameda East Park	57
Alameda West	95

Accessible Routes : Exterior Routes Memorial Park

Finding: 1

The route of travel does not provide the required minimum width.

The minimum clear width for sidewalks and walks is 48 inches.

When, because of right-of-way restrictions, natural barriers or other existing conditions, the enforcing agency determines that compliance with the 48-inch clear sidewalk width would create an unreasonable hardship, the clear width may be reduced to 36 inches.

2022 CBC 11B Section 11B-403.5.1 Exceptions: 3

The clear width for sidewalks and walks shall be 48 inches (1219 mm) minimum. When, because of right-of-way restrictions, natural barriers or other existing conditions, the enforcing agency determines that compliance with the 48-inch (1219 mm) clear sidewalk width would create an unreasonable hardship, the clear width may be reduced to 36 inches (914 mm).

Citation:

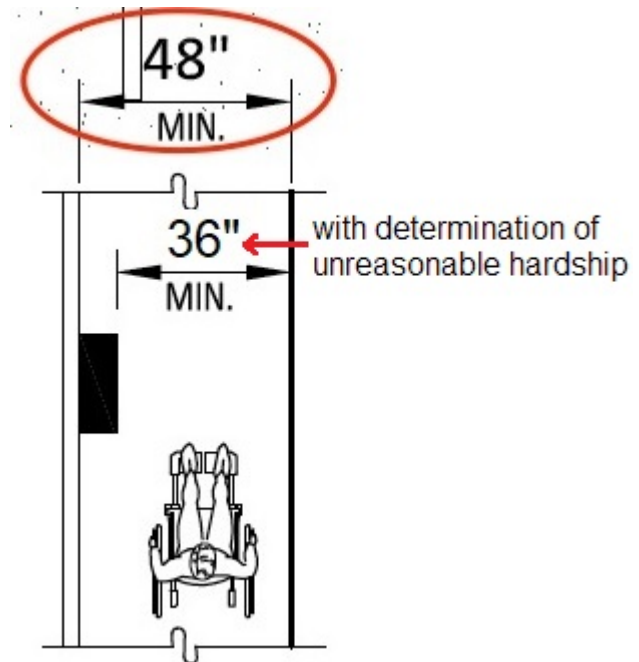
As Built:

2022 CBC 11B Section:
11B-403.5.1 Exceptions: 3

N/A

Recommendation:

See exception 3 in the findings section



Finding: 1 Additional Finding Photos



Accessible Routes : Exterior Routes Memorial Park

Finding: 2

The walkway contains abrupt vertical edges and/or variations over 1/4 inch.

1/4 inch is the maximum vertical rise. Changes in level between 1/4 inch and 1/2 inch must be beveled at 1:2 or less.

Changes in level greater than 1/2 inch must be by way of a ramp.

2010 ADAS Section 303.3

Changes in level between 1/4 inch (6.4 mm) high minimum and 1/2 inch (13 mm) high maximum shall be beveled with a slope not steeper than 1:2.

2010 ADAS Section 303.2

Changes in level of 1/4 inch (6.4 mm) high maximum shall be permitted to be vertical.

2022 CBC 11B Section 11B-303.2

Changes in level of 1/4 inch (6.4 mm) high maximum shall be permitted to be vertical and without edge treatment.

2022 CBC 11B Section 11B-303.3

Changes in level between 1/4 inch (6.4 mm) high minimum and 1/2 inch (12.7 mm) high maximum shall be beveled with a slope not steeper than 1:2.

Citation:

As Built:

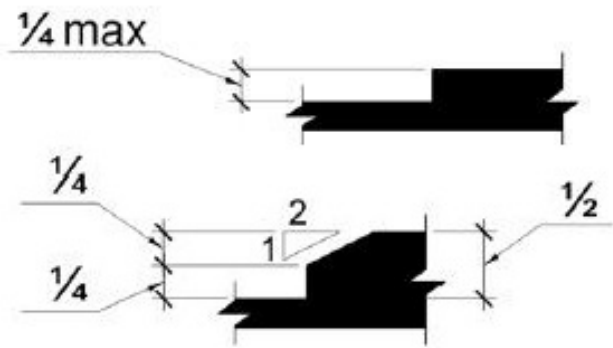
2010 ADAS Section: 303.3, 303.2 N/A

2022 CBC 11B Section:
11B-303.2, 11B-303.3

Recommendation:

N/A - Refer to Finding

Finding: 2 (Continued)



Finding: 2 Additional Finding Photos



Accessible Routes : Exterior Routes Memorial Park

Finding: 3

The accessible route has running slopes greater than 5% and has not been constructed as a ramp (i.e. handrails, edge protection, etc.). Cross slopes are greater than 2% across the width of the walk.

When the slope in the direction of travel of any walk exceeds 1 unit vertical in 20 units horizontal (5-percent slope), it must be constructed as a ramp. Surface cross slopes must not exceed 1 unit vertical in 48 units horizontal (2-percent slope).

2010 ADAS Section 403.3

The running slope of walking surfaces shall not be steeper than 1:20. The cross slope of walking surfaces shall not be steeper than 1:48.

2022 CBC 11B Section 11B-403.3

The running slope of walking surfaces shall not be steeper than 1:20. The cross slope of walking surfaces shall not be steeper than 1:48.

Citation:

2010 ADAS Section: 403.3

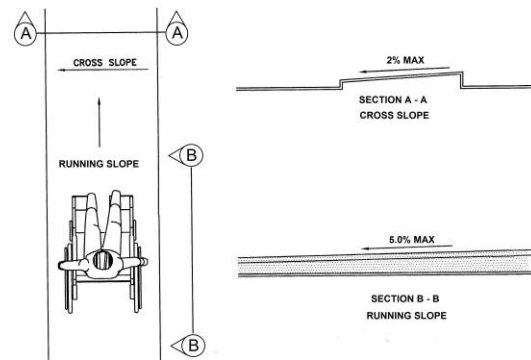
As Built:

N/A

2022 CBC 11B Section:
11B-403.3

Recommendation:

N/A - Refer to Finding



Finding: 3 Additional Finding Photos



Accessible Routes : Exterior Routes Memorial Park

Finding: 4

The entrance is not accessible and is missing signage. An identification sign identifying that this entrance is not accessible and directional signage pointing to the accessible entrance is required.

When a directional sign is required, it should be located to minimize backtracking. In some cases, this could mean locating a sign at the beginning of a route, not just at the inaccessible entrances to a building.

2010 ADAS Section 216.6

Where not all entrances comply with 404, entrances complying with 404 shall be identified by the International Symbol of Accessibility complying with 703.7.2.1. Directional signs complying with 703.5 that indicate the location of the nearest entrance complying with 404 shall be provided at entrances that do not comply with 404.

2022 CBC 11B Section 11B-216.6

In existing buildings and facilities where not all entrances comply with Section 11B-404, entrances complying with Section 11B-404 shall be identified by the International Symbol of Accessibility complying with Section 11B-703.7.2.1. Directional signs complying with Section 11B-703.5 that indicate the location of the nearest entrance complying with Section 11B-404 shall be provided at entrances that do not comply with Section 11B-404. Directional signs complying with Section 11B-703.5, including the International Symbol of Accessibility complying with Section 11B-703.7.2.1, indicating the accessible route to the nearest accessible entrance shall be provided at junctions when the accessible route diverges from the regular circulation path.

Citation:

As Built:

2010 ADAS Section: 216.6

N/A

2022 CBC 11B Section:
11B-216.6

Recommendation:

N/A - Refer to Finding

Finding: 4 (Continued)



Finding: 4 Additional Finding Photos



Accessible Routes : Exterior Routes Memorial Park

Finding: 5

The stairway is not nearly compliant.

The stairway treads and risers are not uniform and are not within the required height.

The stairway contains open risers. The tread surface contains slopes exceeding 2% and or changes in level.

The stairway is missing or contains contrasting stripes that are not on the required treads.

The tread nosings projects beyond the riser more than 1 1/4 inch. The nosing curvature is greater than 1/2 inch maximum.

The stairway does not have compliant handrails on both sides of the stairway.

The stairway tread and/or landing accumulates water.

The required floor identification sign is not provided.

2022 CBC 11B Section 11B-504.1

Stairs shall comply with Section 11B-504.

Citation:

As Built:

2022 CBC 11B Section:
11B-504.1

N/A

Recommendation:

N/A - Refer to Finding



Accessible Routes : Exterior Routes Memorial Park

Finding: 6

There is an abrupt change in level greater than 4 inches.

Abrupt changes in level exceeding 4 inches in a vertical dimension between walks, sidewalks or other pedestrian ways and adjacent surfaces or features shall be identified by warning curbs at least 6 inches in height above the walk or sidewalk surface.

A warning curb is not required between a walk or sidewalk and an adjacent street or driveway.

A warning curb is not required when a guard or handrail is provided with a guide rail centered 2 inches minimum and 4 inches maximum above the surface of the walk or sidewalk.

2022 CBC 11B Section 11B-303.5

Abrupt changes in level exceeding 4 inches (102 mm) in a vertical dimension between walks, sidewalks or other pedestrian ways and adjacent surfaces or features shall be identified by warning curbs at least 6 inches (152 mm) in height above the walk or sidewalk surface.

Citation:

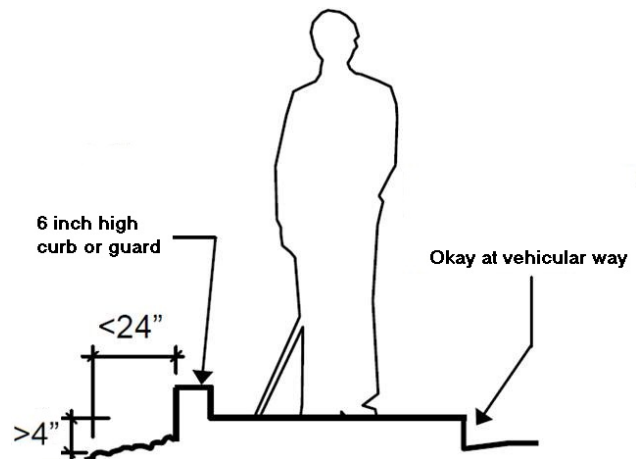
2022 CBC 11B Section:
11B-303.5

As Built:

N/A

Recommendation:

N/A - Refer to Finding



Finding: 6 Additional Finding Photos



Accessible Routes : Exterior Routes Memorial Park

Finding: 7

The walkway contains abrupt vertical edges and/or variations over 1/4 inch.

1/4 inch is the maximum vertical rise. Changes in level between 1/4 inch and 1/2 inch must be beveled at 1:2 or less.

Changes in level greater than 1/2 inch must be by way of a ramp.

2010 ADAS Section 303.3

Changes in level between 1/4 inch (6.4 mm) high minimum and 1/2 inch (13 mm) high maximum shall be beveled with a slope not steeper than 1:2.

2010 ADAS Section 303.2

Changes in level of 1/4 inch (6.4 mm) high maximum shall be permitted to be vertical.

2022 CBC 11B Section 11B-303.2

Changes in level of 1/4 inch (6.4 mm) high maximum shall be permitted to be vertical and without edge treatment.

2022 CBC 11B Section 11B-303.3

Changes in level between 1/4 inch (6.4 mm) high minimum and 1/2 inch (12.7 mm) high maximum shall be beveled with a slope not steeper than 1:2.

Citation:

As Built:

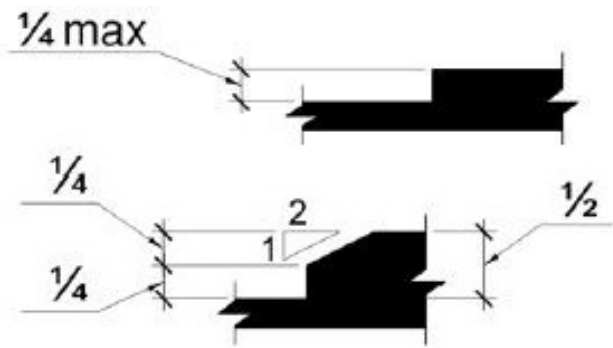
2010 ADAS Section: 303.3, 303.2 N/A

2022 CBC 11B Section:
11B-303.2, 11B-303.3

Recommendation:

N/A - Refer to Finding

Finding: 7 (Continued)



Accessible Routes : Exterior Routes Memorial Park

Finding: 8

The walkway contains abrupt vertical edges and/or variations over 1/4 inch.

1/4 inch is the maximum vertical rise. Changes in level between 1/4 inch and 1/2 inch must be beveled at 1:2 or less.

Changes in level greater than 1/2 inch must be by way of a ramp.

2010 ADAS Section 303.3

Changes in level between 1/4 inch (6.4 mm) high minimum and 1/2 inch (13 mm) high maximum shall be beveled with a slope not steeper than 1:2.

2010 ADAS Section 303.2

Changes in level of 1/4 inch (6.4 mm) high maximum shall be permitted to be vertical.

2022 CBC 11B Section 11B-303.2

Changes in level of 1/4 inch (6.4 mm) high maximum shall be permitted to be vertical and without edge treatment.

2022 CBC 11B Section 11B-303.3

Changes in level between 1/4 inch (6.4 mm) high minimum and 1/2 inch (12.7 mm) high maximum shall be beveled with a slope not steeper than 1:2.

Citation:

As Built:

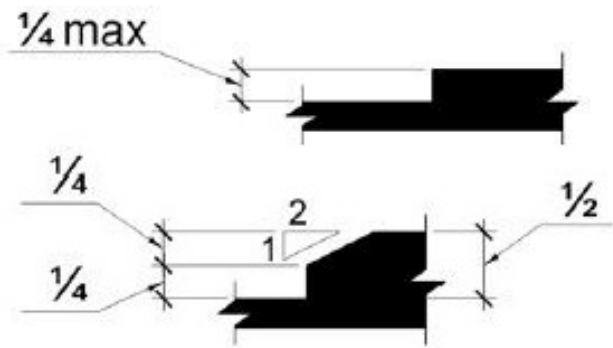
2010 ADAS Section: 303.3, 303.2 N/A

2022 CBC 11B Section:
11B-303.2, 11B-303.3

Recommendation:

N/A - Refer to Finding

Finding: 8 (Continued)



Accessible Routes : Exterior Routes Memorial Park

Finding: 9

The element is not accessible because there is not adequate clear floor space for an approach.

The clear floor or ground space shall be 30 inches minimum by 48 inches minimum.

2010 ADAS Section 305.3

The clear floor or ground space shall be 30 inches (760 mm) minimum by 48 inches (1220 mm) minimum

2022 CBC 11B Section 11B-305.3

The clear floor or ground space shall be 30 inches (762 mm) minimum by 48 inches (1219 mm) minimum.

Citation:

2010 ADAS Section: 305.3

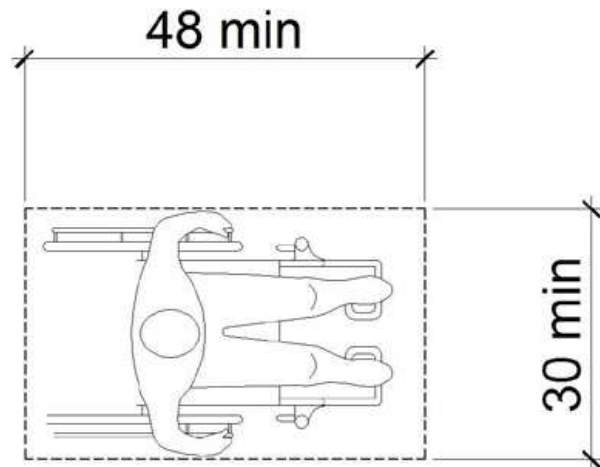
As Built:

N/A

2022 CBC 11B Section:
11B-305.3

Recommendation:

Provide level floor space at all of the audio stations



Finding: 9 Additional Finding Photos



Accessible Routes : Exterior Routes Memorial Park

Finding: 10

The entrance is not accessible and is missing signage. An identification sign identifying that this entrance is not accessible and directional signage pointing to the accessible entrance is required.

When a directional sign is required, it should be located to minimize backtracking. In some cases, this could mean locating a sign at the beginning of a route, not just at the inaccessible entrances to a building.

2010 ADAS Section 216.6

Where not all entrances comply with 404, entrances complying with 404 shall be identified by the International Symbol of Accessibility complying with 703.7.2.1. Directional signs complying with 703.5 that indicate the location of the nearest entrance complying with 404 shall be provided at entrances that do not comply with 404.

2022 CBC 11B Section 11B-216.6

In existing buildings and facilities where not all entrances comply with Section 11B-404, entrances complying with Section 11B-404 shall be identified by the International Symbol of Accessibility complying with Section 11B-703.7.2.1. Directional signs complying with Section 11B-703.5 that indicate the location of the nearest entrance complying with Section 11B-404 shall be provided at entrances that do not comply with Section 11B-404. Directional signs complying with Section 11B-703.5, including the International Symbol of Accessibility complying with Section 11B-703.7.2.1, indicating the accessible route to the nearest accessible entrance shall be provided at junctions when the accessible route diverges from the regular circulation path.

Citation:

As Built:

2010 ADAS Section: 216.6

And stairs

2022 CBC 11B Section:
11B-216.6

Recommendation:

N/A - Refer to Finding

Finding: 10 *(Continued)*



Accessible Routes : Exterior Routes Memorial Park**Finding: 11**

There is no drinking fountain for standing persons.

No fewer than two drinking fountains shall be provided. One drinking fountain shall meet requirements for wheelchair accessibility and one drinking fountain shall meet requirements for standing persons.

Where a single drinking fountain complies with both wheelchair accessibility and requirements for standing persons, it shall be permitted to be substituted for two separate drinking fountains.

Spout outlets of drinking fountains for standing persons shall be 38 inches minimum and 43 inches maximum above the finish floor or ground.

2010 ADAS Section 602.7

Spout outlets of drinking fountains for standing persons shall be 38 inches (965 mm) minimum and 43 inches (1090 mm) maximum above the finish floor or ground.

2010 ADAS Section 211.2

No fewer than two drinking fountains shall be provided. One drinking fountain shall comply with 602.1 through 602.6 and one drinking fountain shall comply with 602.7.

2022 CBC 11B Section 11B-211.2

No fewer than two drinking fountains shall be provided. When provided, one drinking fountain shall comply with Sections 11B-602.1 through 11 B- 602.6, 11B-602.8 and 11 B-602.9 and one drinking fountain shall comply with Section 11B-602.7 and 11B-602.9.

2022 CBC 11B Section 11B-602.7

Spout outlets of drinking fountains for standing persons shall be 38 inches (965 mm) minimum and 43 inches (1092 mm) maximum above the finish floor or ground.

Citation:**As Built:**

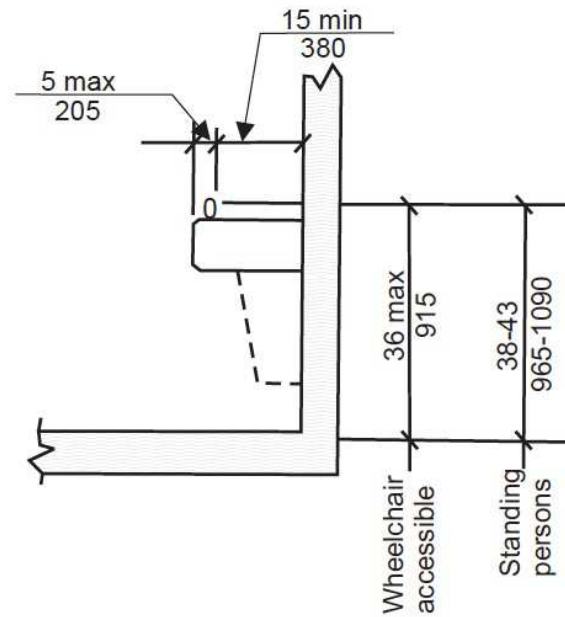
2010 ADAS Section: 602.7, 211.2 plus clear floor space,

2022 CBC 11B Section:
11B-211.2, 11B-602.7

Recommendation:

N/A - Refer to Finding

Finding: 11 (Continued)



Finding: 11 Additional Finding Photos



Accessible Routes : Exterior Routes Memorial Park

Finding: 12

The clear floor space required at accessible drinking fountains is not positioned for a forward approach.

Units shall have a clear floor or ground space positioned for a forward approach and centered on the unit.

2010 ADAS Section 602.2

Units shall have a clear floor or ground space complying with 305 positioned for a forward approach and centered on the unit. Knee and toe clearance complying with 306 shall be provided.

2022 CBC 11B Section 11B-602.2

Units shall have a clear floor or ground space complying with Section 11B-305 positioned for a forward approach and centered on the unit. Knee and toe clearance complying with Section 11B-306 shall be provided.

Citation:

2010 ADAS Section: 602.2

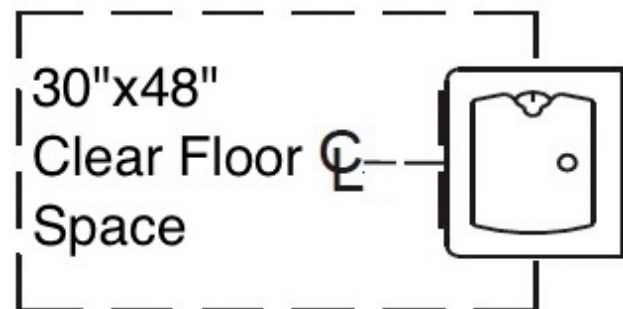
2022 CBC 11B Section:
11B-602.2

As Built:

plus clear floor space,

Recommendation:

N/A - Refer to Finding



Accessible Routes : Exterior Routes Memorial Park

Finding: 13

The entrance is not accessible and is missing signage. An identification sign identifying that this entrance is not accessible and directional signage pointing to the accessible entrance is required.

When a directional sign is required, it should be located to minimize backtracking. In some cases, this could mean locating a sign at the beginning of a route, not just at the inaccessible entrances to a building.

2010 ADAS Section 216.6

Where not all entrances comply with 404, entrances complying with 404 shall be identified by the International Symbol of Accessibility complying with 703.7.2.1. Directional signs complying with 703.5 that indicate the location of the nearest entrance complying with 404 shall be provided at entrances that do not comply with 404.

2022 CBC 11B Section 11B-216.6

In existing buildings and facilities where not all entrances comply with Section 11B-404, entrances complying with Section 11B-404 shall be identified by the International Symbol of Accessibility complying with Section 11B-703.7.2.1. Directional signs complying with Section 11B-703.5 that indicate the location of the nearest entrance complying with Section 11B-404 shall be provided at entrances that do not comply with Section 11B-404. Directional signs complying with Section 11B-703.5, including the International Symbol of Accessibility complying with Section 11B-703.7.2.1, indicating the accessible route to the nearest accessible entrance shall be provided at junctions when the accessible route diverges from the regular circulation path.

Citation:

2010 ADAS Section: 216.6

2022 CBC 11B Section:
11B-216.6

As Built:

here is one that could be
accessible, add ISA

Recommendation:

N/A - Refer to Finding

Finding: 13 *(Continued)*



Accessible Routes : Exterior Routes Memorial Park

Finding: 14

The accessible route has running slopes greater than 5% and has not been constructed as a ramp (i.e. handrails, edge protection, etc.). Cross slopes are greater than 2% across the width of the walk.

When the slope in the direction of travel of any walk exceeds 1 unit vertical in 20 units horizontal (5-percent slope), it must be constructed as a ramp. Surface cross slopes must not exceed 1 unit vertical in 48 units horizontal (2-percent slope).

2010 ADAS Section 403.3

The running slope of walking surfaces shall not be steeper than 1:20. The cross slope of walking surfaces shall not be steeper than 1:48.

2022 CBC 11B Section 11B-403.3

The running slope of walking surfaces shall not be steeper than 1:20. The cross slope of walking surfaces shall not be steeper than 1:48.

Citation:

2010 ADAS Section: 403.3

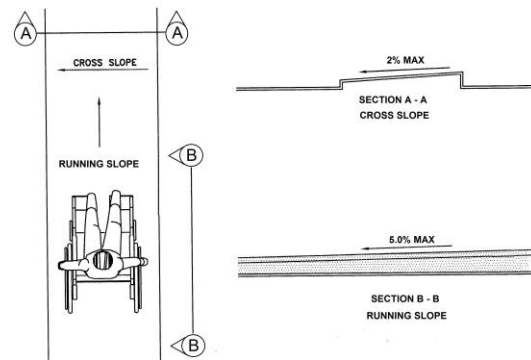
2022 CBC 11B Section:
11B-403.3

As Built:

could be an accessible entrance

Recommendation:

this entrance could be constructed as an accessible entrance



Finding: 14 Additional Finding Photos



Accessible Routes : Exterior Routes Memorial Park**Finding: 15**

The walkway contains abrupt vertical edges and/or variations over 1/4 inch.

1/4 inch is the maximum vertical rise. Changes in level between 1/4 inch and 1/2 inch must be beveled at 1:2 or less.

Changes in level greater than 1/2 inch must be by way of a ramp.

2010 ADAS Section 303.3

Changes in level between 1/4 inch (6.4 mm) high minimum and 1/2 inch (13 mm) high maximum shall be beveled with a slope not steeper than 1:2.

2010 ADAS Section 303.2

Changes in level of 1/4 inch (6.4 mm) high maximum shall be permitted to be vertical.

2022 CBC 11B Section 11B-303.2

Changes in level of 1/4 inch (6.4 mm) high maximum shall be permitted to be vertical and without edge treatment.

2022 CBC 11B Section 11B-303.3

Changes in level between 1/4 inch (6.4 mm) high minimum and 1/2 inch (12.7 mm) high maximum shall be beveled with a slope not steeper than 1:2.

Citation:**As Built:**

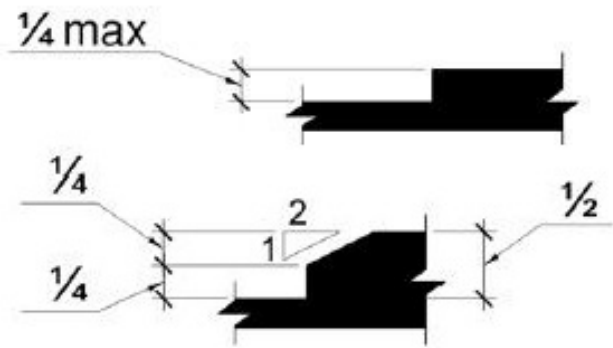
2010 ADAS Section: 303.3, 303.2 N/A

**2022 CBC 11B Section:
11B-303.2, 11B-303.3**

Recommendation:

N/A - Refer to Finding

Finding: 15 (Continued)



Accessible Routes : Exterior Routes Memorial Park

Finding: 16

The stairway is not nearly compliant.

The stairway treads and risers are not uniform and are not within the required height.

The stairway contains open risers. The tread surface contains slopes exceeding 2% and or changes in level.

The stairway is missing or contains contrasting stripes that are not on the required treads.

The tread nosings projects beyond the riser more than 1 1/4 inch. The nosing curvature is greater than 1/2 inch maximum.

The stairway does not have compliant handrails on both sides of the stairway.

The stairway tread and/or landing accumulates water.

The required floor identification sign is not provided.

2022 CBC 11B Section 11B-504.1

Stairs shall comply with Section 11B-504.

Citation:

As Built:

2022 CBC 11B Section:
11B-504.1

N/A

Recommendation:

N/A - Refer to Finding



Finding: 16 Additional Finding Photos



Accessible Routes : Exterior Routes Memorial Park

Finding: 17

The characters do not have the minimum character height.

Minimum character height shall comply with the Visual Character Height Table. Viewing distance shall be measured as the horizontal distance between the character and an obstruction preventing further approach towards the sign. Character height shall be based on the uppercase letter "I".

2010 ADAS Section 703.5.5

Minimum character height shall comply with Table 703.5.5. Viewing distance shall be measured as the horizontal distance between the character and an obstruction preventing further approach towards the sign. Character height shall be based on the uppercase letter "I".

2022 CBC 11B Section 11B-703.5.5

Minimum character height shall comply with Table 11B-703.5.5. Viewing distance shall be measured as the horizontal distance between the character and an obstruction preventing further approach towards the sign. Character height shall be based on the uppercase letter "I".

Citation:

As Built:

2010 ADAS Section: 703.5.5

N/A

2022 CBC 11B Section:
11B-703.5.5

Recommendation:

N/A - Refer to Finding



Visual Character Height

Height to Finish Floor or Ground From Baseline of Character	Horizontal Viewing Distance	Minimum Character Height
40 inches to less than or equal to 70 inches	less than 72 inches	5/8 inch
	72 inches and greater	5/8 inch, plus 1/8 inch per foot of viewing distance above 72 inches
Greater than 70 inches to less than or equal to 120 inches	less than 180 inches	2 inches
	180 inches and greater	2 inches, plus 1/8 inch per foot of viewing distance above 180 inches
Greater than 120 inches	less than 21 feet	3 inches
	21 feet and greater	3 inches, plus 1/8 inch per foot of viewing distance above 21 feet

Accessible Routes : Exterior Routes Memorial Park

Finding: 18

The spacing between lines is not within the allowable range.

Spacing between the baselines of separate lines of Characters within a message shall be 135 percent minimum and 170 percent maximum of the character height.

2010 ADAS Section 703.5.8

Character spacing shall be measured between the two closest points of adjacent characters, excluding word spaces. Spacing between individual characters shall be 10 percent minimum and 35 percent maximum of character height.

2022 CBC 11B Section 11B-703.5.8

Character spacing shall be measured between the two closest points of adjacent characters, excluding word spaces. Spacing between individual characters shall be 10 percent minimum and 35 percent maximum of character height.

Citation:

2010 ADAS Section: 703.5.8

As Built:

N/A

2022 CBC 11B Section:
11B-703.5.8

Recommendation:

N/A - Refer to Finding



Finding: 18 Additional Finding Photos



Accessible Routes : Exterior Routes Memorial Park

Finding: 19

The entrance is not accessible and is missing signage. An identification sign identifying that this entrance is not accessible and directional signage pointing to the accessible entrance is required.

When a directional sign is required, it should be located to minimize backtracking. In some cases, this could mean locating a sign at the beginning of a route, not just at the inaccessible entrances to a building.

2010 ADAS Section 216.6

Where not all entrances comply with 404, entrances complying with 404 shall be identified by the International Symbol of Accessibility complying with 703.7.2.1. Directional signs complying with 703.5 that indicate the location of the nearest entrance complying with 404 shall be provided at entrances that do not comply with 404.

2022 CBC 11B Section 11B-216.6

In existing buildings and facilities where not all entrances comply with Section 11B-404, entrances complying with Section 11B-404 shall be identified by the International Symbol of Accessibility complying with Section 11B-703.7.2.1. Directional signs complying with Section 11B-703.5 that indicate the location of the nearest entrance complying with Section 11B-404 shall be provided at entrances that do not comply with Section 11B-404. Directional signs complying with Section 11B-703.5, including the International Symbol of Accessibility complying with Section 11B-703.7.2.1, indicating the accessible route to the nearest accessible entrance shall be provided at junctions when the accessible route diverges from the regular circulation path.

Citation:

As Built:

2010 ADAS Section: 216.6

too steep

2022 CBC 11B Section:
11B-216.6

Recommendation:

N/A - Refer to Finding

Finding: 19 *(Continued)*



Finding: 19 Additional Finding Photos



Accessible Routes : Exterior Routes Memorial Park

Finding: 20

The entrance is not accessible and is missing signage. An identification sign identifying that this entrance is not accessible and directional signage pointing to the accessible entrance is required.

When a directional sign is required, it should be located to minimize backtracking. In some cases, this could mean locating a sign at the beginning of a route, not just at the inaccessible entrances to a building.

2010 ADAS Section 216.6

Where not all entrances comply with 404, entrances complying with 404 shall be identified by the International Symbol of Accessibility complying with 703.7.2.1. Directional signs complying with 703.5 that indicate the location of the nearest entrance complying with 404 shall be provided at entrances that do not comply with 404.

2022 CBC 11B Section 11B-216.6

In existing buildings and facilities where not all entrances comply with Section 11B-404, entrances complying with Section 11B-404 shall be identified by the International Symbol of Accessibility complying with Section 11B-703.7.2.1. Directional signs complying with Section 11B-703.5 that indicate the location of the nearest entrance complying with Section 11B-404 shall be provided at entrances that do not comply with Section 11B-404. Directional signs complying with Section 11B-703.5, including the International Symbol of Accessibility complying with Section 11B-703.7.2.1, indicating the accessible route to the nearest accessible entrance shall be provided at junctions when the accessible route diverges from the regular circulation path.

Citation:**As Built:**

2010 ADAS Section: 216.6

N/A

**2022 CBC 11B Section:
11B-216.6**

Recommendation:

N/A - Refer to Finding

Finding: 20 (Continued)



Accessible Routes : Exterior Routes Memorial Park

Finding: 21

The walking surface is obstructed.

A 48 inch minimum clear walking surface is required.

2022 CBC 11B Section 11B-403.5.1 Exceptions: 3

The clear width for sidewalks and walks shall be 48 inches (1219 mm) minimum. When, because of right-of-way restrictions, natural barriers or other existing conditions, the enforcing agency determines that compliance with the 48-inch (1219 mm) clear sidewalk width would create an unreasonable hardship, the clear width may be reduced to 36 inches (914 mm).

Citation:

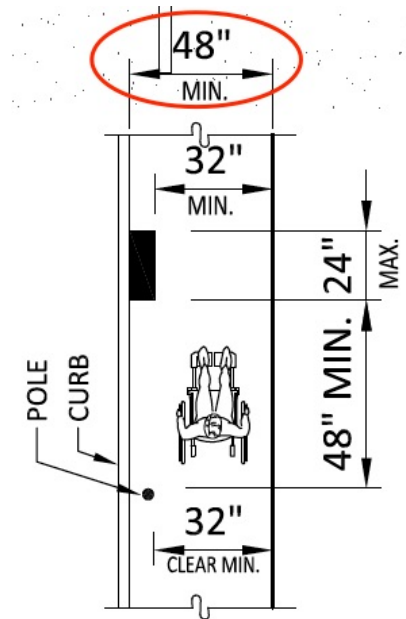
2022 CBC 11B Section:
11B-403.5.1 Exceptions: 3

As Built:

edge protections and route, not
this finding

Recommendation:

N/A - Refer to Finding



Note:

Ensure accessible path of travel is not blocked by trash cans, POP displays, ect.

Finding: 21 Additional Finding Photos



Accessible Routes : Exterior Routes Memorial Park

Finding: 22

There is an abrupt change in level greater than 4 inches.

Abrupt changes in level exceeding 4 inches in a vertical dimension between walks, sidewalks or other pedestrian ways and adjacent surfaces or features shall be identified by warning curbs at least 6 inches in height above the walk or sidewalk surface.

A warning curb is not required between a walk or sidewalk and an adjacent street or driveway.

A warning curb is not required when a guard or handrail is provided with a guide rail centered 2 inches minimum and 4 inches maximum above the surface of the walk or sidewalk.

2022 CBC 11B Section 11B-303.5

Abrupt changes in level exceeding 4 inches (102 mm) in a vertical dimension between walks, sidewalks or other pedestrian ways and adjacent surfaces or features shall be identified by warning curbs at least 6 inches (152 mm) in height above the walk or sidewalk surface.

Citation:

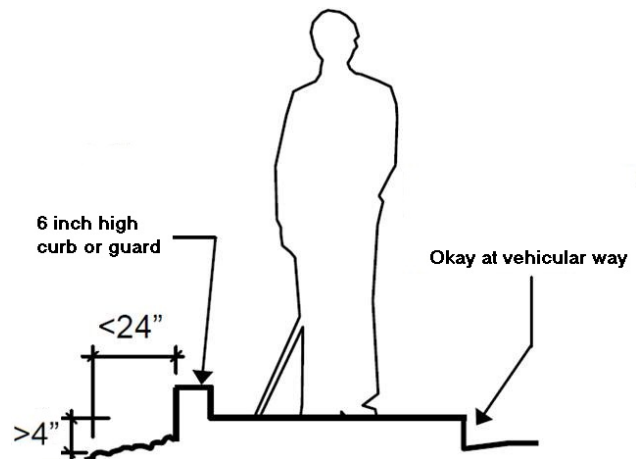
2022 CBC 11B Section:
11B-303.5

As Built:

edge protections and route,

Recommendation:

N/A - Refer to Finding



Accessible Routes : Exterior Routes Memorial Park

Finding: 23

The stairway is not nearly compliant.

The stairway treads and risers are not uniform and are not within the required height.

The stairway is missing or contains contrasting stripes that are not on the required treads.

The nosing curvature is greater than 1/2 inch maximum.

The stairway does not have compliant handrails on both sides of the stairway.

2022 CBC 11B Section 11B-504.1

Stairs shall comply with Section 11B-504.

Citation:

2022 CBC 11B Section:
11B-504.1

As Built:

handrail, riser height

Recommendation:

N/A - Refer to Finding



Finding: 23 Additional Finding Photos



Accessible Routes : Exterior Routes Memorial Park

Finding: 24

The entrance is not accessible and is missing signage. An identification sign identifying that this entrance is not accessible and directional signage pointing to the accessible entrance is required.

When a directional sign is required, it should be located to minimize backtracking. In some cases, this could mean locating a sign at the beginning of a route, not just at the inaccessible entrances to a building.

2010 ADAS Section 216.6

Where not all entrances comply with 404, entrances complying with 404 shall be identified by the International Symbol of Accessibility complying with 703.7.2.1. Directional signs complying with 703.5 that indicate the location of the nearest entrance complying with 404 shall be provided at entrances that do not comply with 404.

2022 CBC 11B Section 11B-216.6

In existing buildings and facilities where not all entrances comply with Section 11B-404, entrances complying with Section 11B-404 shall be identified by the International Symbol of Accessibility complying with Section 11B-703.7.2.1. Directional signs complying with Section 11B-703.5 that indicate the location of the nearest entrance complying with Section 11B-404 shall be provided at entrances that do not comply with Section 11B-404. Directional signs complying with Section 11B-703.5, including the International Symbol of Accessibility complying with Section 11B-703.7.2.1, indicating the accessible route to the nearest accessible entrance shall be provided at junctions when the accessible route diverges from the regular circulation path.

Citation:**As Built:**

2010 ADAS Section: 216.6

N/A

**2022 CBC 11B Section:
11B-216.6**

Recommendation:

N/A - Refer to Finding

Finding: 24 (Continued)



Accessible Routes : Exterior Routes Memorial Park

Finding: 25

The stairway does not have handrails.

Stairways must have handrails on both sides.

Handrails and their extensions must be between 34 inches and 38 inches above the stair nosing or ground.

Top handrails shall extend 12 inches minimum beyond the top nosing and be parallel with the floor or ground.

Bottom landing handrail must extend a min. of 12 inches plus the tread width, beyond the bottom nosing.

One handrail shall be in the direction of the run of the stair and perpendicular to the stair nosing.

Handrails projecting from walls shall have a space of 1-1/2 inches minimum between the wall and the handrail.

2022 CBC 11B Section 11B-505.2

Handrails shall be provided on both sides of stairs and ramps.

Citation:

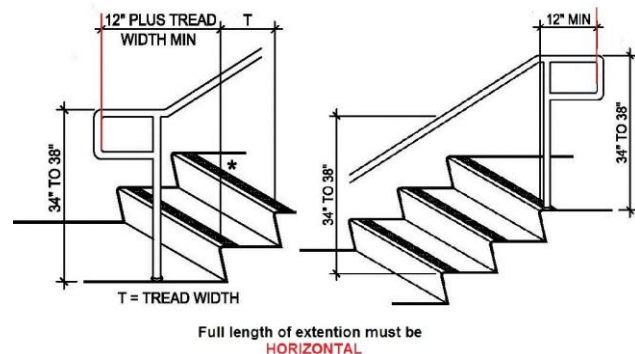
2022 CBC 11B Section:
11B-505.2

As Built:

N/A

Recommendation:

N/A - Refer to Finding



Accessible Routes : Exterior Routes Memorial Park

Finding: 26

The stair risers are not uniform in height.

On any given flight of stairs, all steps shall have uniform riser height and uniform tread widths.

2010 ADAS Section 504.2

All steps on a flight of stairs shall have uniform riser heights and uniform tread depths. Risers shall be 4 inches (100 mm) high minimum and 7 inches (180 mm) high maximum. Treads shall be 11 inches (280 mm) deep minimum.

2022 CBC 11B Section 11B-504.2

All steps on a flight of stairs shall have uniform riser heights and uniform tread depths. Risers shall be 4 inches (102 mm) high minimum and 7 inches (178 mm) high maximum. Treads shall be 11 inches (279 mm) deep minimum.

Citation:

2010 ADAS Section: 504.2

As Built:

N/A

2022 CBC 11B Section:
11B-504.2

Recommendation:

N/A - Refer to Finding



Accessible Routes : Exterior Routes Memorial Park

Finding: 27

The detectable warning is missing at the curb ramp.

Detectable warnings at curb ramps shall extend 36 inches in the direction of travel. Detectable warnings shall extend the full width of the ramp run less 2 inches maximum on each side, excluding any flared sides. Detectable warnings shall be located so the edge nearest the curb is 6 inches minimum and 8 inches maximum from the line at the face of the curb marking the transition between the curb and the gutter, street or highway.

2022 CBC 11B Section 11B-247.1.2.2

Curb ramps shall have detectable warnings complying with Sections 11B-705.1.1 and 11B-705.1.2.2.

2022 CBC 11B Section 11B-705.1.2.2.1

Detectable warnings at curb ramps shall extend 36 inches (914 mm) in the direction of travel. Detectable warnings shall extend the full width of the ramp run less 2 inches (51 mm) maximum on each side, excluding any flared sides. Detectable warnings shall be located so the edge nearest the curb is 6 inches (152 mm) minimum and 8 inches (203 mm) maximum from the demarcation line at the face of the curb between the curb and the gutter, street or highway.

2022 CBC 11B Section 11B-247.1.2.2

Curb ramps shall have detectable warnings complying with Sections 11B-705.1.1 and 11B-705.1.2.2.

2022 CBC 11B Section 11B-705.1.2.2

Detectable warnings at curb ramps shall comply with Section 11B-705.1.2.2.

Citation:

2022 CBC 11B Section:
11B-247.1.2.2, 11B-705.1.2.2.1,
11B-247.1.2.2, 11B-705.1.2.2

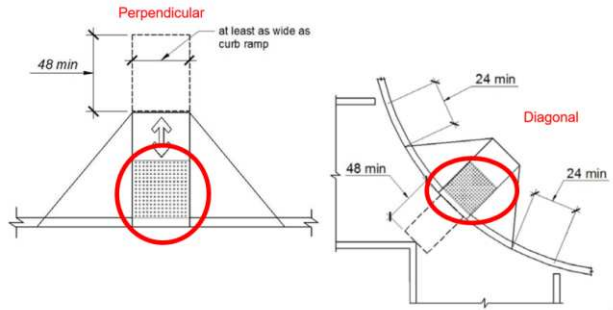
As Built:

detectable warning

Recommendation:

N/A - Refer to Finding

Finding: 27 (Continued)



Accessible Routes : Exterior Routes Memorial Park

Finding: 28

The detectable warning is not the correct color.

Detectable warning surfaces shall be yellow and approximate FS 33538 of SAE AMS-STD-595A.

2022 CBC 11B Section 11B-705.1.1.3.1

Detectable warning surfaces shall be yellow and approximate FS 33538 of SAE AMS-STD-595A.

Citation:

2022 CBC 11B Section:
11B-705.1.1.3.1

As Built:

detectable warning, route to
restrooms that serve this park.
also, cross walk is not
accessible

Recommendation:

Should also be 36" deep in the direction of travel



Finding: 28 Additional Finding Photos



Accessible Routes : Alameda East Park

Finding: 29

The geometric sign for the women's room is missing.

A circle symbol shall be located at entrances to women's toilet and bathing facilities. The circle symbol shall be 1/4 inch thick and 12 inches in diameter. The color of the circle symbol shall contrast with the color of the door or surface on which the circle symbol is mounted, either light on a dark background or dark on a light background.

2022 CBC 11B Section 11B-703.7.2.6.2

A circle, 1/4 inch (6.4 mm) thick and 12 inches (305 mm) in diameter, shall be located at entrances to woMen's toilet and bathing facilities. The circle symbol shall contrast with the door, either light on a dark background or dark on a light background.

Citation:

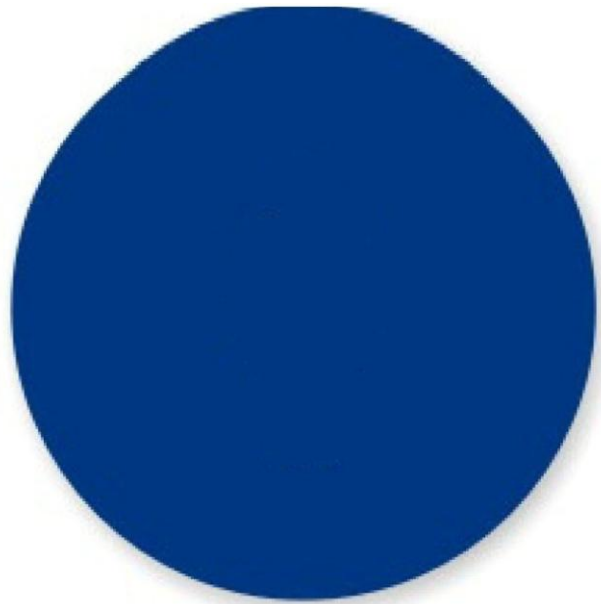
2022 CBC 11B Section:
11B-703.7.2.6.2

As Built:

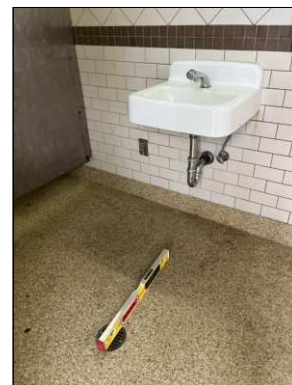
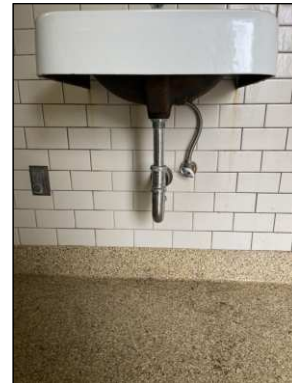
Womens Restroom

Recommendation:

missing



Finding: 29 Additional Finding Photos



Finding: 29 Additional Finding Photos



Accessible Routes : Alameda East Park

Finding: 30

There is no accessible route to the accessible element.

At least one accessible route shall connect accessible buildings, accessible facilities, accessible elements, and accessible spaces that are on the same site.

2010 ADAS Section 206.2.2

At least one accessible route shall connect accessible buildings, accessible facilities, accessible elements, and accessible spaces that are on the same site.

2022 CBC 11B Section 11B-206.2.2

At least one accessible route shall connect accessible buildings, accessible facilities, accessible elements, and accessible spaces that are on the same site.

Citation:

2010 ADAS Section: 206.2.2

As Built:

no accessible route

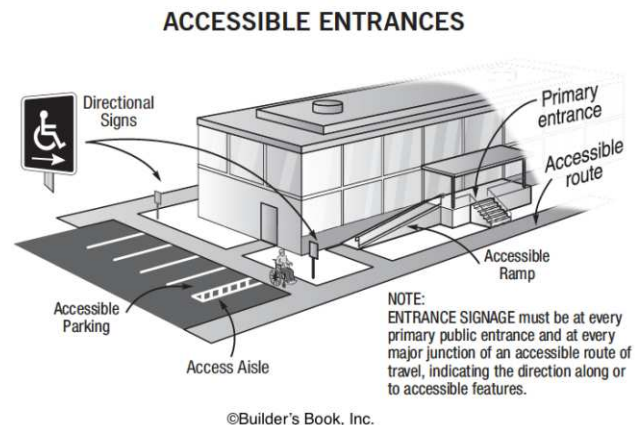
2022 CBC 11B Section:

11B-206.2.2

Recommendation:

There are accessible tables, but no accessible route to the tables.

Provide accessible route to the picnic tables



Finding: 30 Additional Finding Photos



Accessible Routes : Alameda East Park

Finding: 31

An accessible route is not provided within the play area or it does not connect accessible ground level components, elevated components, or the entry and exit points of the play components.

At least one accessible route shall be provided within the play area. The accessible route shall connect ground level play components required to be accessible and elevated play components required to be accessible, including entry and exit points of the play components.

2010 ADAS Section 206.2.17.1

At least one accessible route shall be provided within the play area. The accessible route shall connect ground level play components required to comply with 240.2.1 and elevated play components required to comply with 240.2.2, including entry and exit points of the play components.

2022 CBC 11B Section 11B-206.2.17.1

At least one accessible route shall be provided within the play area. The accessible route shall connect ground level play components required to comply with Section 11B-240.2.1 and elevated play components required to comply with Section 11B-240.2.2, including entry and exit points of the play components.

Citation:

2010 ADAS Section: 206.2.17.1

2022 CBC 11B Section:
11B-206.2.17.1

As Built:

play ground

Recommendation:

N/A - Refer to Finding



Accessible Routes : Alameda East Park

Finding: 32

There is no accessible route to the accessible element.

At least one accessible route shall connect accessible buildings, accessible facilities, accessible elements, and accessible spaces that are on the same site.

2010 ADAS Section 206.2.2

At least one accessible route shall connect accessible buildings, accessible facilities, accessible elements, and accessible spaces that are on the same site.

2022 CBC 11B Section 11B-206.2.2

At least one accessible route shall connect accessible buildings, accessible facilities, accessible elements, and accessible spaces that are on the same site.

Citation:

2010 ADAS Section: 206.2.2

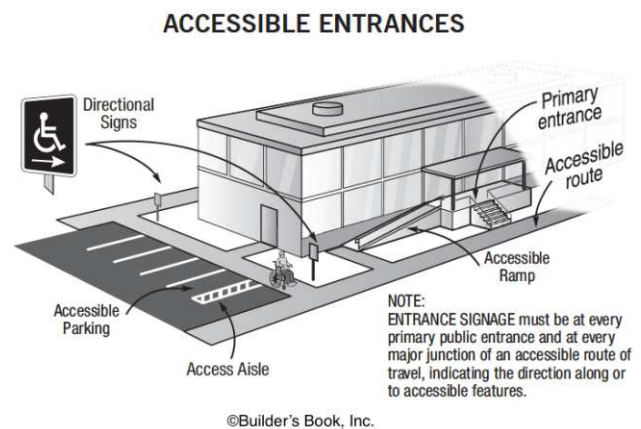
As Built:

to park bench seating area

2022 CBC 11B Section:
11B-206.2.2

Recommendation:

Typical



Accessible Routes : Alameda East Park

Finding: 33

The walkway contains changes in level greater than a 1/2 inch high that should be ramped.

Changes in level greater than 1/2 inch high shall be constructed as a ramp or curb ramp.

2010 ADAS Section 303.4

Changes in level greater than 1/2 inch (13 mm) high shall be ramped, and shall comply with 405 or 406.

2022 CBC 11B Section 11B-303.4

Changes in level greater than 1/2 inch (12.7 mm) high shall be ramped, and shall comply with Section 11B-405 or 11B-406.

Citation:

2010 ADAS Section: 303.4

As Built:

N/A

2022 CBC 11B Section:
11B-303.4

Recommendation:

N/A - Refer to Finding



Finding: 33 Additional Finding Photos



Accessible Routes : Alameda East Park

Finding: 34

The wall sign is mounted too high.

Tactile Characters on signs shall be located 48 inches minimum above the finish floor or ground surface, measured from the baseline of the lowest Braille cells and 60 inches maximum above the finish floor or ground surface, measured from the baseline of the highest line of raised characters. Mounting location shall be determined so that a person may approach within 3 inches of signage without encountering protruding objects and shall be located so that a clear floor space of 18 inches minimum by 18 inches minimum, centered on the tactile Characters, is provided beyond the arc of any door swing between the closed position and 45 degree open position.

2022 CBC 11B Section 11B-703.4.1

Tactile characters on signs shall be located 48 inches (1219 mm) minimum above the finish floor or ground surface, measured from the baseline of the lowest Braille cells and 60 inches (1524 mm) maximum above the finish floor or ground surface, measured from the baseline of the highest line of raised characters.

Citation:

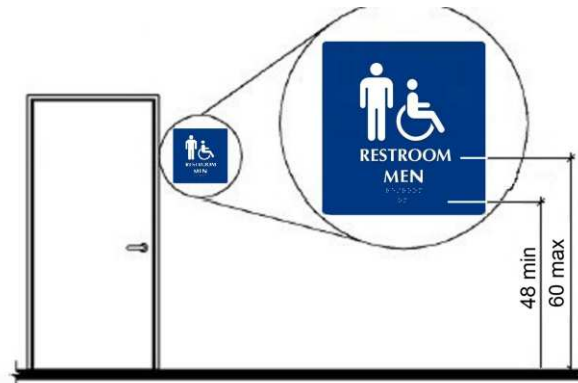
2022 CBC 11B Section:
11B-703.4.1

As Built:

Womens Restroom

Recommendation:

N/A - Refer to Finding



Accessible Routes : Alameda East Park

Finding: 35

The geometric sign for the women's room is missing.

A circle symbol shall be located at entrances to women's toilet and bathing facilities. The circle symbol shall be 1/4 inch thick and 12 inches in diameter. The color of the circle symbol shall contrast with the color of the door or surface on which the circle symbol is mounted, either light on a dark background or dark on a light background.

2022 CBC 11B Section 11B-703.7.2.6.2

A circle, 1/4 inch (6.4 mm) thick and 12 inches (305 mm) in diameter, shall be located at entrances to woMen's toilet and bathing facilities. The circle symbol shall contrast with the door, either light on a dark background or dark on a light background.

Citation:

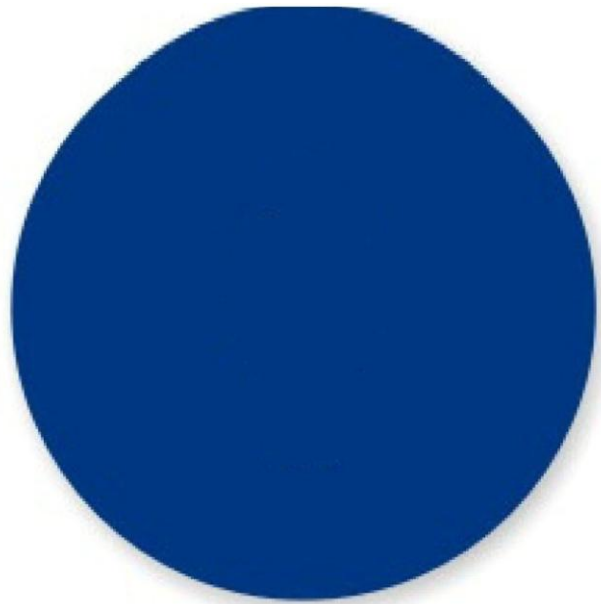
2022 CBC 11B Section:
11B-703.7.2.6.2

As Built:

N/A

Recommendation:

N/A - Refer to Finding



Accessible Routes : Alameda East Park

Finding: 36

A clear floor space is not provided in front of the sign.

Signs containing tactile Characters shall be located so that a clear floor space of 18 inches minimum by 18 inches minimum, centered on the tactile Characters, is provided beyond the arc of any door swing between the closed position and 45 degree open position.

2010 ADAS Section 703.4.2

Where a tactile sign is provided at a door, the sign shall be located alongside the door at the latch side. Where a tactile sign is provided at double doors with one active leaf, the sign shall be located on the inactive leaf. Where a tactile sign is provided at double doors with two active leaves, the sign shall be located to the right of the right hand door. Where there is no wall space at the latch side of a single door or at the right side of double doors, signs shall be located on the nearest adjacent wall. Signs containing tactile characters shall be located so that a clear floor space of 18 inches (455 mm) minimum by 18 inches (455 mm) minimum, centered on the tactile characters, is provided beyond the arc of any door swing between the closed position and 45 degree open position.

2022 CBC 11B Section 11B-703.4.2

Where a tactile sign is provided at a door, the sign shall be located alongside the door at the latch side. Where a tactile sign is provided at double doors with one active leaf, the sign shall be located on the inactive leaf. Where a tactile sign is provided at double doors with two active leaves, the sign shall be located to the right of the right hand door. Where there is no wall space at the latch side of a single door or at the right side of double doors, signs shall be located on the nearest adjacent wall. Signs containing tactile characters shall be located so that a clear floor space of 18 inches (457 mm) minimum by 18 inches (457 mm) minimum, centered on the tactile characters, is provided beyond the arc of any door swing between the closed position and 45 degree open position. Where provided, signs identifying permanent rooms and spaces shall be located at the entrance to, and outside of the room or space. Where provided, signs identifying exits shall be located at the exit door when approached in the direction of egress travel.

Citation:

2010 ADAS Section: 703.4.2

2022 CBC 11B Section:
11B-703.4.2

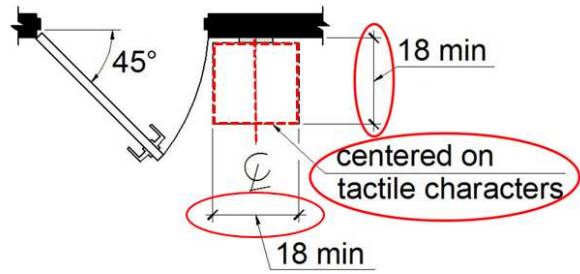
As Built:

Womens Restroom

Recommendation:

N/A - Refer to Finding

Finding: 36 (Continued)



Accessible Routes : Alameda East Park

Finding: 37

The water and drain pipes under the lavatory are not adequately insulated.

Water supply and drain pipes under lavatories and sinks shall be insulated or otherwise configured to protect against contact. There shall be no sharp or abrasive surfaces under lavatories and sinks.

2010 ADAS Section 606.5

Water supply and drain pipes under lavatories and sinks shall be insulated or otherwise configured to protect against contact. There shall be no sharp or abrasive surfaces under lavatories and sinks.

2022 CBC 11B Section 11B-606.5

Water supply and drain pipes under lavatories and sinks shall be insulated or otherwise configured to protect against contact. There shall be no sharp or abrasive surfaces under lavatories and sinks.

Citation:

2010 ADAS Section: 606.5

As Built:

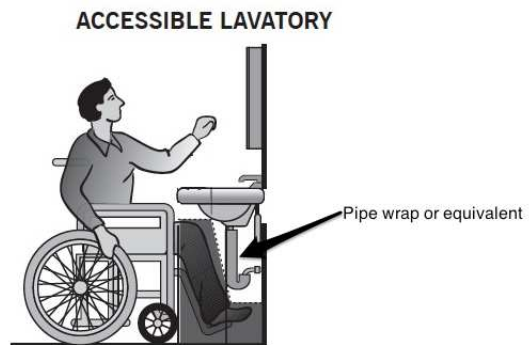
Womens Restroom

2022 CBC 11B Section:

11B-606.5

Recommendation:

all sharp items and pipes are required to be covered



Accessible Routes : Alameda East Park**Finding: 38**

The compartment door is not self closing.

The water closet compartment shall be equipped with a door that has an automatic-closing device.

2010 ADAS Section 604.8.1.2

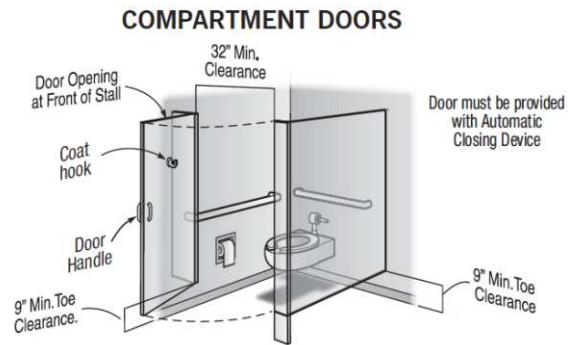
Toilet compartment doors, including door hardware, shall comply with 404 except that if the approach is to the latch side of the compartment door, clearance between the door side of the compartment and any obstruction shall be 42 inches (1065 mm) minimum. Doors shall be located in the front partition or in the side wall or partition farthest from the water closet. Where located in the front partition, the door opening shall be 4 inches (100 mm) maximum from the side wall or partition farthest from the water closet. Where located in the side wall or partition, the door opening shall be 4 inches (100 mm) maximum from the front partition. The door shall be self-closing. A door pull complying with 404.2.7 shall be placed on both sides of the door near the latch. Toilet compartment doors shall not swing into the minimum required compartment area.

2022 CBC 11B Section 11B-604.8.1.2

Toilet compartment doors, including door hardware, shall comply with Section 11B-404 except that if the approach is from the push side of the compartment door, clearance between the door side of the compartment and any obstruction shall be 48 inches (1219 mm) minimum measured perpendicular to the compartment door in its closed position. Doors shall be located in the front partition or in the side wall or partition farthest from the water closet. Where located in the front partition, the door opening shall be 4 inches (102 mm) maximum from the side wall or partition farthest from the water closet. Where located in the side wall or partition, the door opening hinge side jamb for out swinging doors shall be farthest from the water closet and the strike side jamb shall be 54 inches (1372 mm) minimum from the rear wall. The door shall be self-closing. A door pull complying with Section 11B-404.2.1 shall be placed on both sides of the door near the latch. Doors shall not swing into the clear floor space or clearance required for any fixture. Doors may swing into that portion of maneuvering space which does not overlap the clearance required at a water closet.

Citation:**As Built:****2010 ADAS Section: 604.8.1.2****N/A****2022 CBC 11B Section:
11B-604.8.1.2****Recommendation:****N/A - Refer to Finding**

Finding: 38 (Continued)



Accessible Routes : Alameda East Park

Finding: 39

The water closet compartment is missing a loop handle on both sides of the door.

Water closet compartments must be equipped with a door that has a loop or U-shaped handle on both sides of the door immediately below the latch. The latch must be flip-over style, sliding or other hardware not requiring the user to grasp or twist.

2010 ADAS Section 604.8.1.2

Toilet compartment doors, including door hardware, shall comply with 404 except that if the approach is to the latch side of the compartment door, clearance between the door side of the compartment and any obstruction shall be 42 inches (1065 mm) minimum. Doors shall be located in the front partition or in the side wall or partition farthest from the water closet. Where located in the front partition, the door opening shall be 4 inches (100 mm) maximum from the side wall or partition farthest from the water closet. Where located in the side wall or partition, the door opening shall be 4 inches (100 mm) maximum from the front partition. The door shall be self-closing. A door pull complying with 404.2.7 shall be placed on both sides of the door near the latch. Toilet compartment doors shall not swing into the minimum required compartment area.

2022 CBC 11B Section 11B-604.8.1.2

Toilet compartment doors, including door hardware, shall comply with Section 11B-404 except that if the approach is from the push side of the compartment door, clearance between the door side of the compartment and any obstruction shall be 48 inches (1219 mm) minimum measured perpendicular to the compartment door in its closed position. Doors shall be located in the front partition or in the side wall or partition farthest from the water closet. Where located in the front partition, the door opening shall be 4 inches (102 mm) maximum from the side wall or partition farthest from the water closet. Where located in the side wall or partition, the door opening hinge side jamb for out swinging doors shall be farthest from the water closet and the strike side jamb shall be 54 inches (1372 mm) minimum from the rear wall. The door shall be self-closing. A door pull complying with Section 11B-404.2.1 shall be placed on both sides of the door near the latch. Doors shall not swing into the clear floor space or clearance required for any fixture. Doors may swing into that portion of maneuvering space which does not overlap the clearance required at a water closet.

Citation:

As Built:

2010 ADAS Section: 604.8.1.2

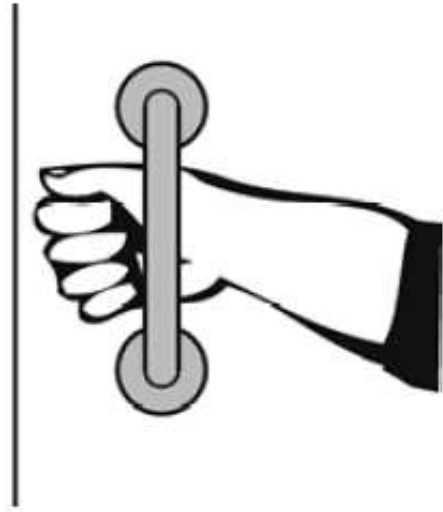
N/A

**2022 CBC 11B Section:
11B-604.8.1.2**

Recommendation:

N/A - Refer to Finding

Finding: 39 (Continued)



Finding: 39 Additional Finding Photos



Accessible Routes : Alameda East Park

Finding: 40

A clear floor space is not provided at the lavatory.

A 30 inch by 48 inch clear floor space positioned for a forward approach, and knee and toe clearance shall be provided.

2010 ADAS Section 606.2

A clear floor space complying with 305, positioned for a forward approach, and knee and toe clearance complying with 306 shall be provided.

2022 CBC 11B Section 11B-606.2

A clear floor space complying with Section 11B-305, positioned for a forward approach, and knee and toe clearance complying with Section 11B-306 shall be provided.

Citation:

As Built:

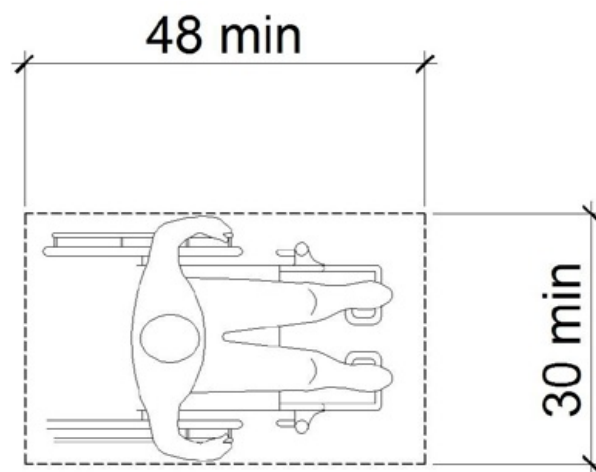
2010 ADAS Section: 606.2

N/A

2022 CBC 11B Section:
11B-606.2

Recommendation:

not level floor space



Finding: 40 Additional Finding Photos



Accessible Routes : Alameda East Park

Finding: 41

The accessible route on the site has running slopes greater than 5 percent and has not been constructed as a ramp (i.e. handrails, edge protection, etc.).

When the slope in the direction of travel of any walk exceeds 1 unit vertical in 20 units horizontal (5-percent slope), it must be constructed as a ramp. Surface cross slopes must not exceed one unit vertical in 48 units horizontal (2-percent slope).

2010 ADAS Section 403.3

The running slope of walking surfaces shall not be steeper than 1:20. The cross slope of walking surfaces shall not be steeper than 1:48.

2022 CBC 11B Section 11B-403.3

The running slope of walking surfaces shall not be steeper than 1:20. The cross slope of walking surfaces shall not be steeper than 1:48.

Citation:

2010 ADAS Section: 403.3

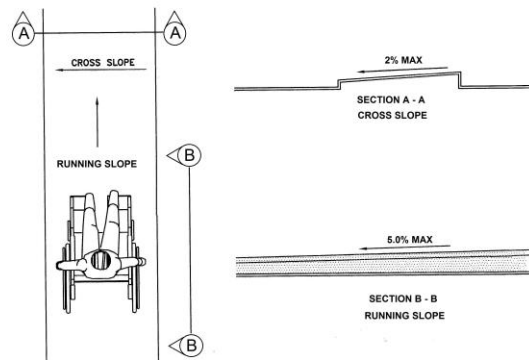
2022 CBC 11B Section:
11B-403.3

As Built:

Womens Restroom

Recommendation:

N/A - Refer to Finding



Finding: 41 Additional Finding Photos



Accessible Routes : Alameda East Park**Finding: 42**

There is no drinking fountain for standing persons.

No fewer than two drinking fountains shall be provided. One drinking fountain shall meet requirements for wheelchair accessibility and one drinking fountain shall meet requirements for standing persons.

Where a single drinking fountain complies with both wheelchair accessibility and requirements for standing persons, it shall be permitted to be substituted for two separate drinking fountains.

Spout outlets of drinking fountains for standing persons shall be 38 inches minimum and 43 inches maximum above the finish floor or ground.

2010 ADAS Section 602.7

Spout outlets of drinking fountains for standing persons shall be 38 inches (965 mm) minimum and 43 inches (1090 mm) maximum above the finish floor or ground.

2010 ADAS Section 211.2

No fewer than two drinking fountains shall be provided. One drinking fountain shall comply with 602.1 through 602.6 and one drinking fountain shall comply with 602.7.

2022 CBC 11B Section 11B-211.2

No fewer than two drinking fountains shall be provided. When provided, one drinking fountain shall comply with Sections 11B-602.1 through 11 B- 602.6, 11B-602.8 and 11 B-602.9 and one drinking fountain shall comply with Section 11B-602.7 and 11B-602.9.

2022 CBC 11B Section 11B-602.7

Spout outlets of drinking fountains for standing persons shall be 38 inches (965 mm) minimum and 43 inches (1092 mm) maximum above the finish floor or ground.

Citation:**As Built:**

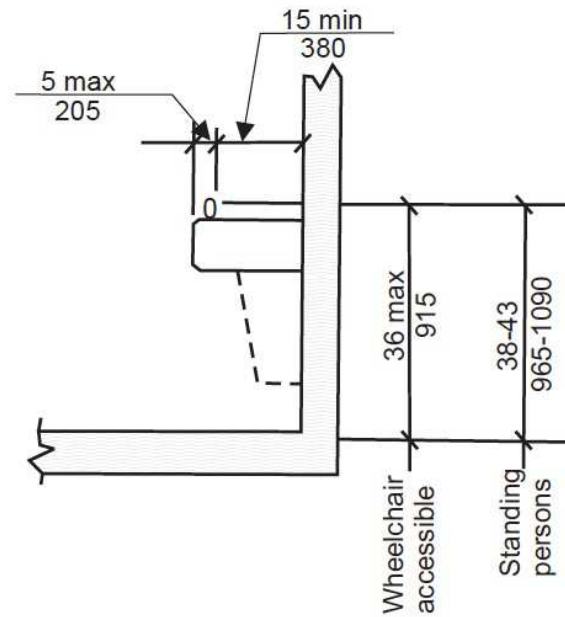
2010 ADAS Section: 602.7, 211.2 no standing

2022 CBC 11B Section:
11B-211.2, 11B-602.7

Recommendation:

N/A - Refer to Finding

Finding: 42 (Continued)



Accessible Routes : Alameda East Park

Finding: 43

The wall sign is mounted too high.

Tactile Characters on signs shall be located 48 inches minimum above the finish floor or ground surface, measured from the baseline of the lowest Braille cells and 60 inches maximum above the finish floor or ground surface, measured from the baseline of the highest line of raised characters. Mounting location shall be determined so that a person may approach within 3 inches of signage without encountering protruding objects and shall be located so that a clear floor space of 18 inches minimum by 18 inches minimum, centered on the tactile Characters, is provided beyond the arc of any door swing between the closed position and 45 degree open position.

2022 CBC 11B Section 11B-703.4.1

Tactile characters on signs shall be located 48 inches (1219 mm) minimum above the finish floor or ground surface, measured from the baseline of the lowest Braille cells and 60 inches (1524 mm) maximum above the finish floor or ground surface, measured from the baseline of the highest line of raised characters.

Citation:

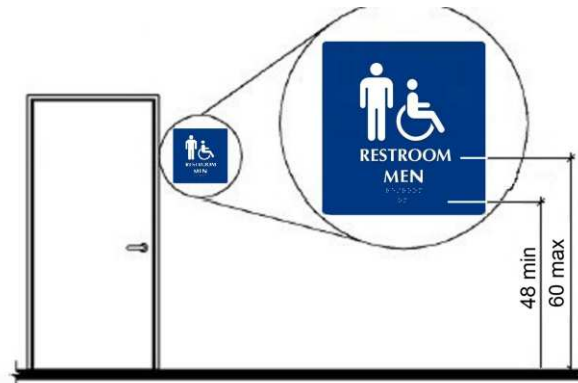
2022 CBC 11B Section:
11B-703.4.1

As Built:

N/A

Recommendation:

N/A - Refer to Finding



Accessible Routes : Alameda East Park

Finding: 44

The geometric sign for the men's room is missing.

A triangle symbol shall be located at entrances to men's toilet and bathing facilities. The triangle symbol shall be an equilateral triangle 1/4 inch thick with edges 12 inches long and a vertex pointing upward. The color of the triangle symbol shall contrast with the color of the door or surface on which the triangle symbol is mounted, either light on a dark background or dark on a light background.

2022 CBC 11B Section 11B-703.7.2.6.1

An equilateral triangle, 1/4 inch (6.4 mm) thick with edges 12 inches (305 mm) long and a vertex pointing upward, shall be located at entrances to Men's toilet and bathing facilities. The triangle symbol shall contrast with the door, either light on a dark background or dark on a light background.

Citation:

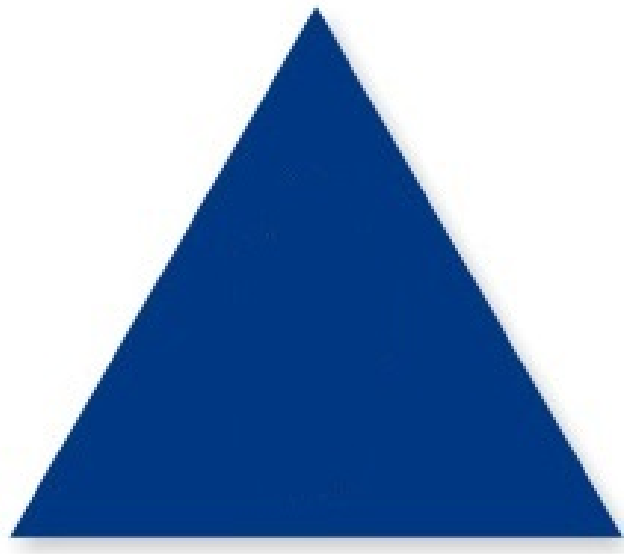
2022 CBC 11B Section:
11B-703.7.2.6.1

As Built:

N/A

Recommendation:

N/A - Refer to Finding



Finding: 44 Additional Finding Photos



Accessible Routes : Alameda East Park

Finding: 45

A clear floor space is not centered on the tactile characters of the sign.

Signs containing tactile Characters shall be located so that a clear floor space of 18 inches minimum by 18 inches minimum, centered on the tactile Characters, is provided beyond the arc of any door swing between the closed position and 45 degree open position.

2010 ADAS Section 703.4.2

Where a tactile sign is provided at a door, the sign shall be located alongside the door at the latch side. Where a tactile sign is provided at double doors with one active leaf, the sign shall be located on the inactive leaf. Where a tactile sign is provided at double doors with two active leafs, the sign shall be located to the right of the right hand door. Where there is no wall space at the latch side of a single door or at the right side of double doors, signs shall be located on the nearest adjacent wall. Signs containing tactile characters shall be located so that a clear floor space of 18 inches (455 mm) minimum by 18 inches (455 mm) minimum, centered on the tactile characters, is provided beyond the arc of any door swing between the closed position and 45 degree open position.

2022 CBC 11B Section 11B-703.4.2

Where a tactile sign is provided at a door, the sign shall be located alongside the door at the latch side. Where a tactile sign is provided at double doors with one active leaf, the sign shall be located on the inactive leaf. Where a tactile sign is provided at double doors with two active leafs, the sign shall be located to the right of the right hand door. Where there is no wall space at the latch side of a single door or at the right side of double doors, signs shall be located on the nearest adjacent wall. Signs containing tactile characters shall be located so that a clear floor space of 18 inches (457 mm) minimum by 18 inches (457 mm) minimum, centered on the tactile characters, is provided beyond the arc of any door swing between the closed position and 45 degree open position. Where provided, signs identifying permanent rooms and spaces shall be located at the entrance to, and outside of the room or space. Where provided, signs identifying exits shall be located at the exit door when approached in the direction of egress travel.

Citation:

2010 ADAS Section: 703.4.2

As Built:

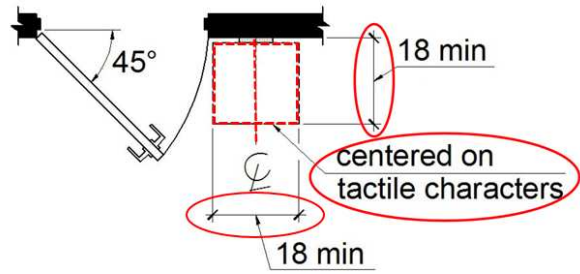
N/A

2022 CBC 11B Section:
11B-703.4.2

Recommendation:

N/A - Refer to Finding

Finding: 45 (Continued)



Accessible Routes : Alameda East Park

Finding: 46

The compartment door is not self closing.

The water closet compartment shall be equipped with a door that has an automatic-closing device.

2010 ADAS Section 604.8.1.2

Toilet compartment doors, including door hardware, shall comply with 404 except that if the approach is to the latch side of the compartment door, clearance between the door side of the compartment and any obstruction shall be 42 inches (1065 mm) minimum. Doors shall be located in the front partition or in the side wall or partition farthest from the water closet. Where located in the front partition, the door opening shall be 4 inches (100 mm) maximum from the side wall or partition farthest from the water closet. Where located in the side wall or partition, the door opening shall be 4 inches (100 mm) maximum from the front partition. The door shall be self-closing. A door pull complying with 404.2.7 shall be placed on both sides of the door near the latch. Toilet compartment doors shall not swing into the minimum required compartment area.

2022 CBC 11B Section 11B-604.8.1.2

Toilet compartment doors, including door hardware, shall comply with Section 11B-404 except that if the approach is from the push side of the compartment door, clearance between the door side of the compartment and any obstruction shall be 48 inches (1219 mm) minimum measured perpendicular to the compartment door in its closed position. Doors shall be located in the front partition or in the side wall or partition farthest from the water closet. Where located in the front partition, the door opening shall be 4 inches (102 mm) maximum from the side wall or partition farthest from the water closet. Where located in the side wall or partition, the door opening hinge side jamb for out swinging doors shall be farthest from the water closet and the strike side jamb shall be 54 inches (1372 mm) minimum from the rear wall. The door shall be self-closing. A door pull complying with Section 11B-404.2.1 shall be placed on both sides of the door near the latch. Doors shall not swing into the clear floor space or clearance required for any fixture. Doors may swing into that portion of maneuvering space which does not overlap the clearance required at a water closet.

Citation:

As Built:

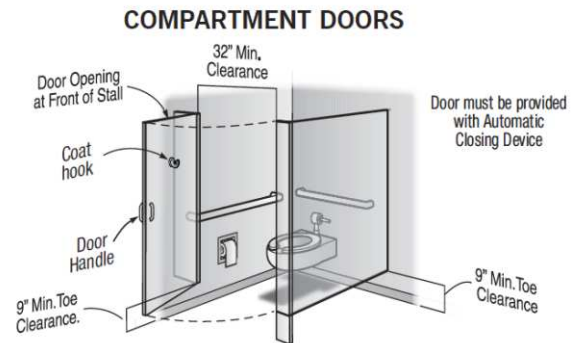
2010 ADAS Section: 604.8.1.2

N/A

2022 CBC 11B Section:
11B-604.8.1.2

Recommendation:
maintenance is required

Finding: 46 (Continued)



Accessible Routes : Alameda East Park

Finding: 47

The water closet compartment is missing a loop handle on both sides of the door.

Water closet compartments must be equipped with a door that has a loop or U-shaped handle on both sides of the door immediately below the latch. The latch must be flip-over style, sliding or other hardware not requiring the user to grasp or twist.

2010 ADAS Section 604.8.1.2

Toilet compartment doors, including door hardware, shall comply with 404 except that if the approach is to the latch side of the compartment door, clearance between the door side of the compartment and any obstruction shall be 42 inches (1065 mm) minimum. Doors shall be located in the front partition or in the side wall or partition farthest from the water closet. Where located in the front partition, the door opening shall be 4 inches (100 mm) maximum from the side wall or partition farthest from the water closet. Where located in the side wall or partition, the door opening shall be 4 inches (100 mm) maximum from the front partition. The door shall be self-closing. A door pull complying with 404.2.7 shall be placed on both sides of the door near the latch. Toilet compartment doors shall not swing into the minimum required compartment area.

2022 CBC 11B Section 11B-604.8.1.2

Toilet compartment doors, including door hardware, shall comply with Section 11B-404 except that if the approach is from the push side of the compartment door, clearance between the door side of the compartment and any obstruction shall be 48 inches (1219 mm) minimum measured perpendicular to the compartment door in its closed position. Doors shall be located in the front partition or in the side wall or partition farthest from the water closet. Where located in the front partition, the door opening shall be 4 inches (102 mm) maximum from the side wall or partition farthest from the water closet. Where located in the side wall or partition, the door opening hinge side jamb for out swinging doors shall be farthest from the water closet and the strike side jamb shall be 54 inches (1372 mm) minimum from the rear wall. The door shall be self-closing. A door pull complying with Section 11B-404.2.1 shall be placed on both sides of the door near the latch. Doors shall not swing into the clear floor space or clearance required for any fixture. Doors may swing into that portion of maneuvering space which does not overlap the clearance required at a water closet.

Citation:

As Built:

2010 ADAS Section: 604.8.1.2

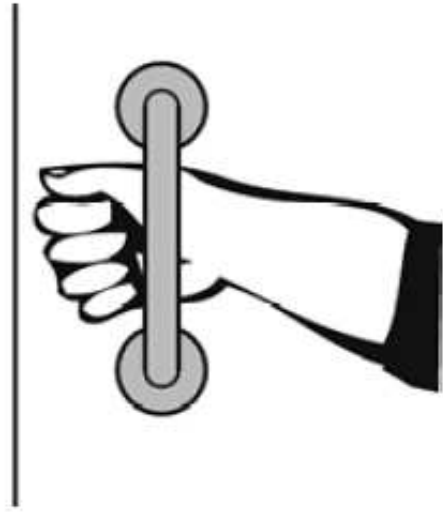
N/A

**2022 CBC 11B Section:
11B-604.8.1.2**

Recommendation:

N/A - Refer to Finding

Finding: 47 (Continued)



Finding: 47 Additional Finding Photos



Accessible Routes : Alameda East Park

Finding: 48

The toilet paper dispenser is mounted too close to the bottom of the grab bar, minimizing the gripping surface.

Adjacent elements shall be positioned to provide unobstructed use of grab bars. The space between the grab bar and projecting objects below and at the ends shall be 1-1/2 inches minimum. The space between the grab bar and projecting objects above shall be 12 inches minimum.

2010 ADAS Section 609.3

The space between the wall and the grab bar shall be 1 1/2 inches (38 mm). The space between the grab bar and projecting objects below and at the ends shall be 1 1/2 inches (38 mm) minimum. The space between the grab bar and projecting objects above shall be 12 inches (305 mm) minimum.

2022 CBC 11B Section 11B-609.3

The space between the wall and the grab bar shall be 1 1/2 inches (38 mm). The space between the grab bar and projecting objects below and at the ends shall be 1 1/2 inches (38 mm) minimum. The space between the grab bar and projecting objects above shall be 12 inches (305 mm) minimum.

Citation:

2010 ADAS Section: 609.3

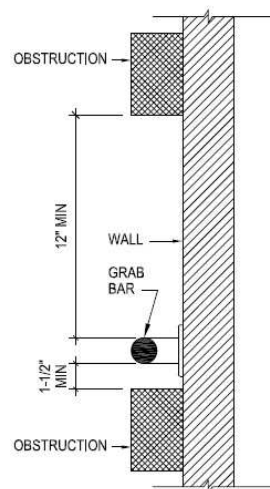
2022 CBC 11B Section:
11B-609.3

As Built:

N/A

Recommendation:

N/A - Refer to Finding



Accessible Routes : Alameda East Park**Finding: 49**

The toilet compartment is not wide enough.

Wheelchair accessible compartments shall be 60 inches wide minimum measured perpendicular to the side wall, and 56 inches deep minimum for wall hung water closets and 59 inches deep minimum for floor mounted water closets measured perpendicular to the rear wall.

2010 ADAS Section 604.8.1.1

Wheelchair accessible compartments shall be 60 inches (1525 mm) wide minimum measured perpendicular to the side wall, and 56 inches (1420 mm) deep minimum for wall hung water closets and 59 inches (1500 mm) deep minimum for floor mounted water closets measured perpendicular to the rear wall. Wheelchair accessible compartments for children's use shall be 60 inches (1525 mm) wide minimum measured perpendicular to the side wall, and 59 inches (1500 mm) deep minimum for wall hung and floor mounted water closets measured perpendicular to the rear wall.

2022 CBC 11B Section 11B-604.8.1.1

Wheelchair accessible compartments shall be 60 inches (1524 mm) wide minimum measured perpendicular to the side wall, and 56 inches (1422 mm) deep minimum for wall hung water closets and 59 inches (1499 mm) deep minimum for floor mounted water closets measured perpendicular to the rear wall. Wheelchair accessible compartments shall additionally provide maneuvering space complying with Section 11B-604.8.1.1.1, 11B-604.8.1.1.2, or 11B- 604.8.1.1.3, as applicable. Wheelchair accessible compartments for children's use shall be 60 inches (1524 mm) wide minimum measured perpendicular to the side wall, and 59 inches (1499 mm) deep minimum for wall hung and floor mounted water closets measured perpendicular to the rear wall.

Citation:**As Built:**

2010 ADAS Section: 604.8.1.1

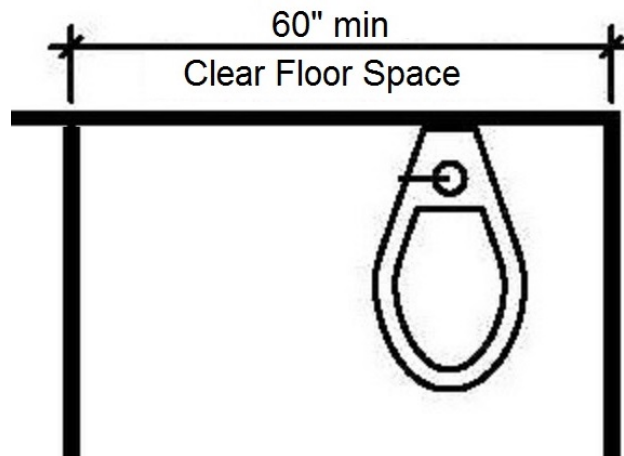
N/A

2022 CBC 11B Section:
11B-604.8.1.1

Recommendation:

N/A - Refer to Finding

Finding: 49 (Continued)



Accessible Routes : Alameda West

Finding: 50

The stage area participation area is not on an accessible route.

Participation areas shall be accessible to persons with disabilities, including the following listed and similar activity areas:

1. Tennis, racquetball and handball courts.
2. Gymnasium floor areas and general exercise rooms.
3. Basketball, volleyball and badminton courts, and bowling lanes.
4. Swimming pool deck areas shall be accessible, and a mechanism to assist persons with disabilities in gaining entry into the pool and in exiting from the pool shall be provided.
5. Athletic team rooms and facilities, playing fields and running tracks.

2022 CBC 11B Section 11B-206.2.18

An accessible route shall be provided to the boundary of each area of sport activity.

Citation:

2022 CBC 11B Section:
11B-206.2.18

As Built:

stage area not accessible

Recommendation:

N/A - Refer to Finding



Accessible Routes : Alameda West

Finding: 51

The entrance is not accessible and is missing signage. An identification sign identifying that this entrance is not accessible and directional signage pointing to the accessible entrance is required.

When a directional sign is required, it should be located to minimize backtracking. In some cases, this could mean locating a sign at the beginning of a route, not just at the inaccessible entrances to a building.

2010 ADAS Section 216.6

Where not all entrances comply with 404, entrances complying with 404 shall be identified by the International Symbol of Accessibility complying with 703.7.2.1. Directional signs complying with 703.5 that indicate the location of the nearest entrance complying with 404 shall be provided at entrances that do not comply with 404.

2022 CBC 11B Section 11B-216.6

In existing buildings and facilities where not all entrances comply with Section 11B-404, entrances complying with Section 11B-404 shall be identified by the International Symbol of Accessibility complying with Section 11B-703.7.2.1. Directional signs complying with Section 11B-703.5 that indicate the location of the nearest entrance complying with Section 11B-404 shall be provided at entrances that do not comply with Section 11B-404. Directional signs complying with Section 11B-703.5, including the International Symbol of Accessibility complying with Section 11B-703.7.2.1, indicating the accessible route to the nearest accessible entrance shall be provided at junctions when the accessible route diverges from the regular circulation path.

Citation:**As Built:**

2010 ADAS Section: 216.6

N/A

**2022 CBC 11B Section:
11B-216.6**

Recommendation:

N/A - Refer to Finding

Finding: 51 (Continued)



Accessible Routes : Alameda West

Finding: 52

The walkway contains abrupt vertical edges and/or variations over 1/4 inch.

1/4 inch is the maximum vertical rise. Changes in level between 1/4 inch and 1/2 inch must be beveled at 1:2 or less.

Changes in level greater than 1/2 inch must be by way of a ramp.

2010 ADAS Section 303.3

Changes in level between 1/4 inch (6.4 mm) high minimum and 1/2 inch (13 mm) high maximum shall be beveled with a slope not steeper than 1:2.

2010 ADAS Section 303.2

Changes in level of 1/4 inch (6.4 mm) high maximum shall be permitted to be vertical.

2022 CBC 11B Section 11B-303.2

Changes in level of 1/4 inch (6.4 mm) high maximum shall be permitted to be vertical and without edge treatment.

2022 CBC 11B Section 11B-303.3

Changes in level between 1/4 inch (6.4 mm) high minimum and 1/2 inch (12.7 mm) high maximum shall be beveled with a slope not steeper than 1:2.

Citation:

As Built:

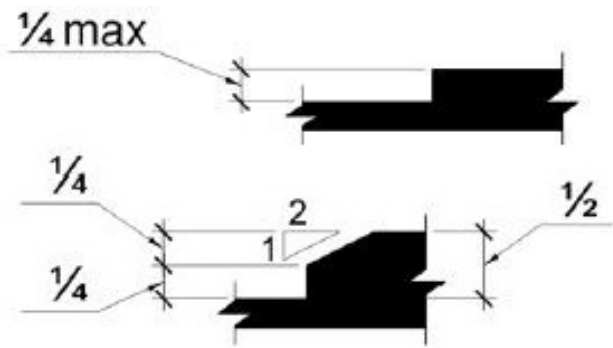
2010 ADAS Section: 303.3, 303.2 N/A

2022 CBC 11B Section:
11B-303.2, 11B-303.3

Recommendation:

N/A - Refer to Finding

Finding: 52 (Continued)



Accessible Routes : Alameda West

Finding: 53

The entrance is not accessible and is missing signage. An identification sign identifying that this entrance is not accessible and directional signage pointing to the accessible entrance is required.

When a directional sign is required, it should be located to minimize backtracking. In some cases, this could mean locating a sign at the beginning of a route, not just at the inaccessible entrances to a building.

2010 ADAS Section 216.6

Where not all entrances comply with 404, entrances complying with 404 shall be identified by the International Symbol of Accessibility complying with 703.7.2.1. Directional signs complying with 703.5 that indicate the location of the nearest entrance complying with 404 shall be provided at entrances that do not comply with 404.

2022 CBC 11B Section 11B-216.6

In existing buildings and facilities where not all entrances comply with Section 11B-404, entrances complying with Section 11B-404 shall be identified by the International Symbol of Accessibility complying with Section 11B-703.7.2.1. Directional signs complying with Section 11B-703.5 that indicate the location of the nearest entrance complying with Section 11B-404 shall be provided at entrances that do not comply with Section 11B-404. Directional signs complying with Section 11B-703.5, including the International Symbol of Accessibility complying with Section 11B-703.7.2.1, indicating the accessible route to the nearest accessible entrance shall be provided at junctions when the accessible route diverges from the regular circulation path.

Citation:**As Built:**

2010 ADAS Section: 216.6

N/A

**2022 CBC 11B Section:
11B-216.6**

Recommendation:

N/A - Refer to Finding

Finding: 53 (Continued)



Accessible Routes : Alameda West

Finding: 54

The outdoor seating area is not on an accessible route.

At least 5% of the seating in each functional area must be accessible. An accessible table must be on an accessible route (36 inches minimum) and have knee spaces at least 27 inches high, 30 inches wide and 19 inches deep. The tops of tables and counters must be 28 inches to 34 inches from the floor or ground.

2010 ADAS Section 226.1

Where dining surfaces are provided for the consumption of food or drink, at least 5 percent of the seating spaces and standing spaces at the dining surfaces shall comply with 902. In addition, where work surfaces are provided for use by other than employees, at least 5 percent shall comply with 902.

2022 CBC 11B Section 11B-226.1

Where dining surfaces are provided for the consumption of food or drink, at least 5 percent of the seating spaces and standing spaces at the dining surfaces shall comply with Section 11B-902. In addition, where work surfaces are provided for use by other than employees, at least 5 percent shall comply with Section 11B-902.

Citation:

2010 ADAS Section: 226.1

2022 CBC 11B Section:
11B-226.1

As Built:

to bench

Recommendation:

N/A - Refer to Finding



Accessible Routes : Alameda West

Finding: 55

The outdoor seating area is not on an accessible route.

At least 5% of the seating in each functional area must be accessible. An accessible table must be on an accessible route (36 inches minimum) and have knee spaces at least 27 inches high, 30 inches wide and 19 inches deep. The tops of tables and counters must be 28 inches to 34 inches from the floor or ground.

2010 ADAS Section 226.1

Where dining surfaces are provided for the consumption of food or drink, at least 5 percent of the seating spaces and standing spaces at the dining surfaces shall comply with 902. In addition, where work surfaces are provided for use by other than employees, at least 5 percent shall comply with 902.

2022 CBC 11B Section 11B-226.1

Where dining surfaces are provided for the consumption of food or drink, at least 5 percent of the seating spaces and standing spaces at the dining surfaces shall comply with Section 11B-902. In addition, where work surfaces are provided for use by other than employees, at least 5 percent shall comply with Section 11B-902.

Citation:

2010 ADAS Section: 226.1

2022 CBC 11B Section:
11B-226.1

As Built:

to bench

Recommendation:

N/A - Refer to Finding



Accessible Routes : Alameda West

Finding: 56

The walkway contains abrupt vertical edges and/or variations over 1/4 inch.

1/4 inch is the maximum vertical rise. Changes in level between 1/4 inch and 1/2 inch must be beveled at 1:2 or less.

Changes in level greater than 1/2 inch must be by way of a ramp.

2010 ADAS Section 303.3

Changes in level between 1/4 inch (6.4 mm) high minimum and 1/2 inch (13 mm) high maximum shall be beveled with a slope not steeper than 1:2.

2010 ADAS Section 303.2

Changes in level of 1/4 inch (6.4 mm) high maximum shall be permitted to be vertical.

2022 CBC 11B Section 11B-303.2

Changes in level of 1/4 inch (6.4 mm) high maximum shall be permitted to be vertical and without edge treatment.

2022 CBC 11B Section 11B-303.3

Changes in level between 1/4 inch (6.4 mm) high minimum and 1/2 inch (12.7 mm) high maximum shall be beveled with a slope not steeper than 1:2.

Citation:

As Built:

2010 ADAS Section: 303.3, 303.2 to bench

2022 CBC 11B Section:
11B-303.2, 11B-303.3

Recommendation:

N/A - Refer to Finding

Finding: 56 (Continued)

